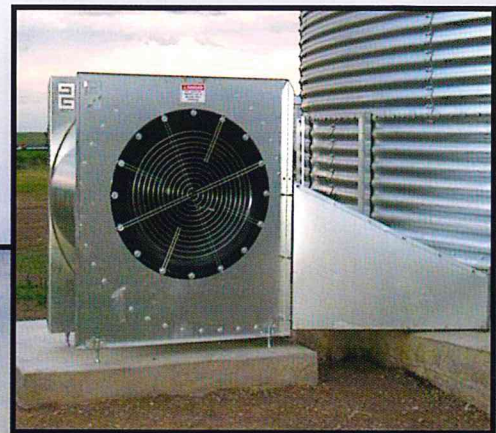


Fans and Heaters

Adequate and even airflow throughout the grain bin is critical to proper cooling, storage and natural air drying. Our heavy duty and quiet centrifugal fans feature airfoil blades, close tolerances and dynamic balancing to give you Superior airflow and years of reliable performance. All housings are made of heavy duty galvanized steel to resist rust and provide long life.

When natural air drying isn't enough, a high quality heater can dramatically increase your drying speed when combined with a high performance fan and stirring machine.



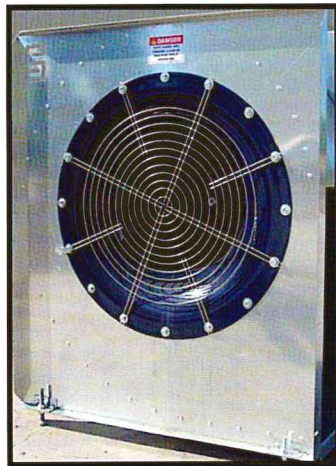
www.superiormanufacturingllc.com
866-822-9145



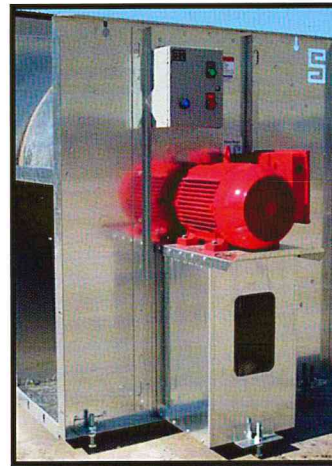
Fan shutters are required for multi-fan installations



Lo-Speed Centrifugal fans provide the highest airflow in almost all static pressure ranges in which you will be operating.



The inlet venturi and airfoil blade are designed for peak operating efficiency.



A full 2 year "no questions asked" warranty is standard on all Superior fan motors.



www.superiormanufacturingllc.com

866-822-9145